

INSTALLATION INSTRUCTIONS

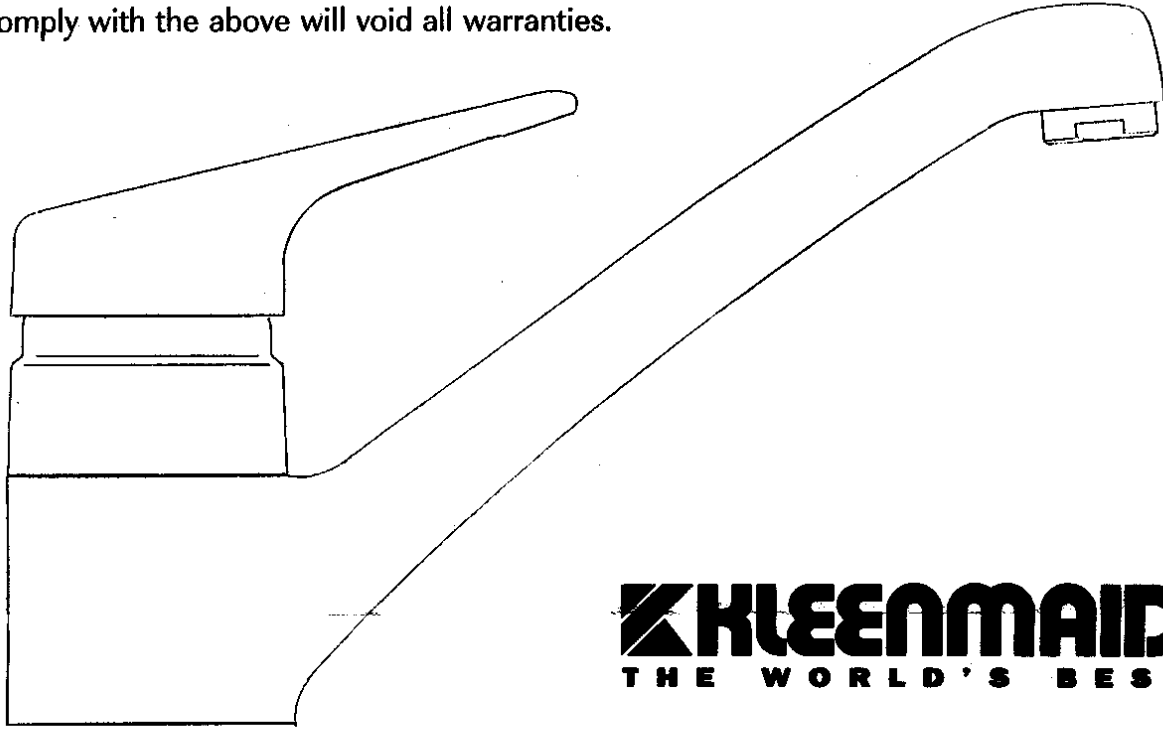
ATTENTION PLUMBER

This Kleenmaid Mixer Tap is a premium quality reliable product approved and licensed to the highest possible Australian Standards.

To ensure the optimum performance and customer satisfaction please adhere to the following:

1. Flush out all pipework prior to installation.
2. Install as per manufacturers instructions.
3. If the water pressure exceeds 1000 Kpa or may exceed 1000 Kpa due to pressure fluctuations, an approved pressure limiting valve must be fitted.
4. If the water temperature exceeds 80°C, an approved tempering valve must be fitted.

Failure to comply with the above will void all warranties.



KLEENMAID
THE WORLD'S BEST

Congratulations on purchasing this high quality single lever operation tap. With proper care and attention your new mixer will last many years.

Your Kleenmaid mixer tap has been designed to suit the lifestyle and tastes of the nineties. It utilises the latest technology in ceramic disc cartridges which have been tested to over 1 million operations. Non return valves fitted inside the Kleenmaid mixer tap give you precise temperature control by preventing cross flow of water, typical of unbalanced hot and cold systems.

In keeping with our more environmentally conscious society, your Kleenmaid mixer tap is manufactured from high density dezincification resistant brass (DZR Brass). This ensures that your water is not contaminated by the leaching of toxic zincs from the brass into your drinking water.

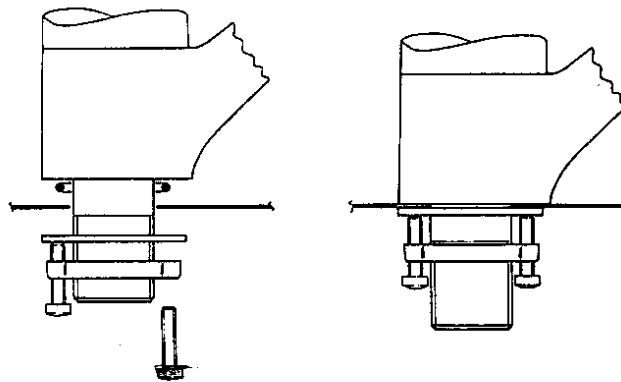
In order that you obtain the best results from your Kleenmaid mixer tap please read and follow the installation instructions carefully.

INSTALLATION INSTRUCTIONS

- To ensure trouble free operation of this mixer, all reticulated pipework should be flushed before the mixer is installed. *Furthermore it is recommended that an in-line filter is fitted*, as this will prevent dirt or metal particles damaging the ceramic discs.
- Your Kleenmaid mixer tap has been designed for use in a range of pressure systems-
 - mains hot water and cold systems
 - gravity fed hot and mains cold
 - instantaneous gas

MOUNTING THE TAP

- If your sink top does not have a tap hole, or you intend to fit the tap into the worksurface, you will need to cut a hole not more than 35mm or less than 32mm. If you are fitting into a worksurface, ensure that the hole is properly sealed.
- Unscrew and remove threaded clamp and galvanised washer from body of mixer.
- Ensure the two screws which go through the clamp are undone such that only a small amount of the screw thread is showing through the top clamp.
- Place mixer through the hole making sure the 'O' ring on the underside of the mixer body is in place. If the optional trim ring is installed, ensure the trim ring is fitted with the taper facing the bench surface.
- Ensure the mixer is mounted with the HOT inlet to the left when facing the mixer. Check that the handle is situated in the central position of its 120° operating arc.
- Replace the galvanised washer under the tap, then screw up the clamp until finger tight. Finally, tighten the mixer by doing up the screws which go through the clamp.

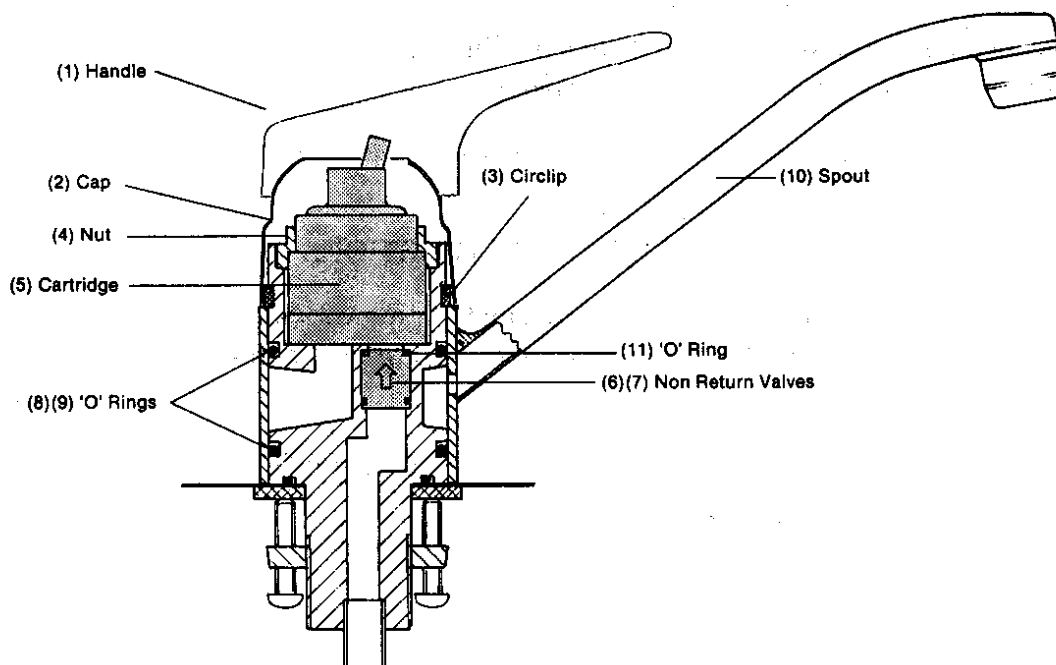


SERVICING THE CARTRIDGE

Turn off the water supply. Tilt the handle back to the full ON position. Unscrew with allen key then:

- Remove handle (1)
- Remove cap (2)
- Remove 'O' Ring from top nut (4)
- Unscrew nut (4)
- Lift out cartridge (5)

N.B.- The cartridge is a non repairable item, please contact your local retailer should you require a new one.



SERVICING NON RETURN VALVES:

To replace or service the non return valves, follow the instructions for servicing the cartridge as detailed above. Once the cartridge has been removed, the non return valves (6)(7) can easily be removed for servicing or replacement.

SERVICING 'O' RINGS

To service 'O' rings (8) and (9) follow the steps for servicing the cartridge as detailed above, and then lift off the spout (10).

If 'O' rings (8) and (9) need replacing then replace with new ones which can be obtained from you local stockist. If not then lightly lubricate with a waterproof grease and then reassemble mixer in reverse order.

N.B.- When reassembling, ensure that all 'O rings are in place and cartridge is correctly located.

TECHNICAL DATA

APPLICATIONS:

Our Kleenmaid Mixer Tap is purposely designed to be suitable for use in all pressure systems including:

- Unequal pressure systems
- Low pressure systems (i.e. gravity feed HOT and COLD)
- Equal high pressure systems (mains pressure HOT and COLD)

TECHNICAL DATA:

- Cold Water Supply: Flow Pressure**

<i>Min</i>	<i>Max</i>
20 KPa (3 psi)	1000 KPa (145 psi)
- Hot Water Supply: Flow Pressure**

<i>Min</i>	<i>Max</i>
20 KPa (3 psi)	1000 KPa (145 psi)
- Maximum recommended hot water temperature 80°
- Inlet pipes - soft copper tube
- Pipe ends - 12.7mm outside diameter
- Connectors supplied

ANTISCALD FEATURE

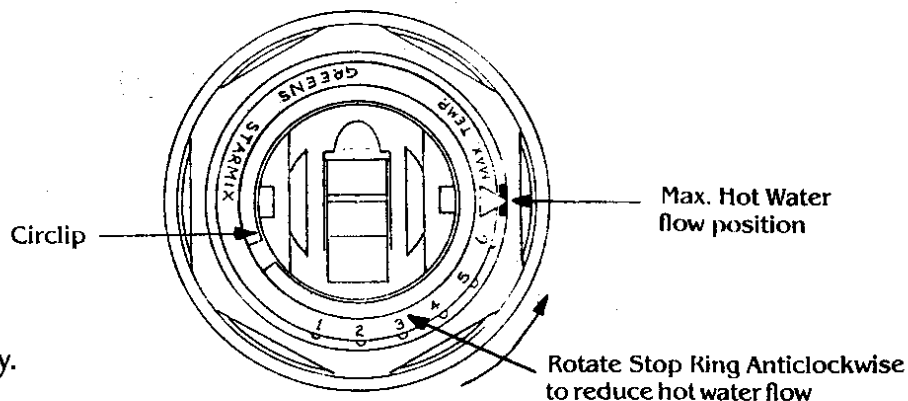
The QL1 Cartridge fitted to this mixer has an adjustable stop ring which can limit the amount of the hot water available in the "Hot" or "Mixed" flow position.

As supplied, the cartridge is factory set at maximum hot water flow. To utilise the anti-scald feature and thereby reduce the danger of scalding, the hot water stop ring must be adjusted as follows:

- Remove handle and cover sleeve
- Remove red circlip on top of cartridge
- Turn cartridge lever to right
- Lift 'stop ring' slightly and rotate anti-clockwise.

NOTE:

- As supplied, the arrow on the 'stop ring' is aligned with the arrow moulded on right hand side of cartridge body. This is the maximum hot water flow position. Minimum hot water flow is achieved by aligning '1' with the arrow on cartridge body.
- Operate mixer, test water temperature and adjust 'stop ring' to obtain desired maximum water temperature.
 - Refit circlip and reassemble mixer.



Guarantee to the Consumer

Congratulations on purchasing a quality Kleenmaid product. With proper care and attention your new tapware will last many years. For your protection please read the following instructions carefully.

KLEENMAIDS WARRANTY

Kleenmaid guarantees their tapware to be free from defects in material and workmanship for a period of 12 months from the date of purchase indicated on the purchaser's receipt. The ceramic disc cartridge fitted to the Kleenmaid Mixer Tap is covered by an additional 4 year parts only warranty.

Kleenmaid undertakes to repair or replace any faulty product within the warranty period, with the exception that any damage to products due to abuse, negligence or improper installation will not be covered under warranty. It is important that installation instructions and procedures are correctly followed and that the mixer is operated within the specifications included in this document.

MAINTENANCE AND CARE

Chrome plated surfaces should be cleaned with a liquid detergent or soap and water. Do not use cleaning agents containing a corrosive acid or scouring agent. Use of unsuitable cleaning agents may damage the surface, any damage caused in this way will not be covered by warranty.

WHAT TO DO IF YOU HAVE A PROBLEM:

Please contact our customer service Hotline on 1-800-072144 and supply details necessary to enable the problem to be rectified soon as possible.

ATTENTION - OWNER

PRODUCT

BATCH No.

Should you require service or replacements for this product please quote the numbers on this form

KLEENMAID

PO Box 5560
Maroochydore
South Queensland 4558